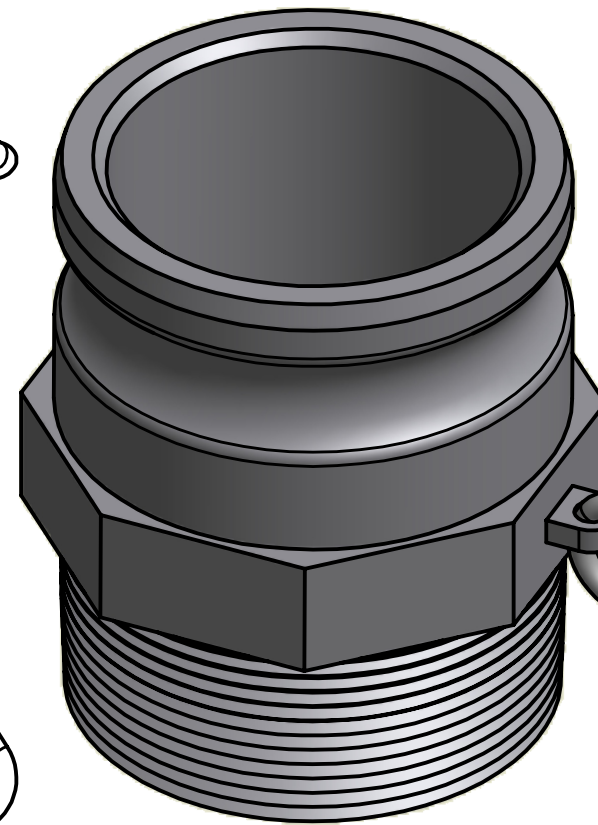
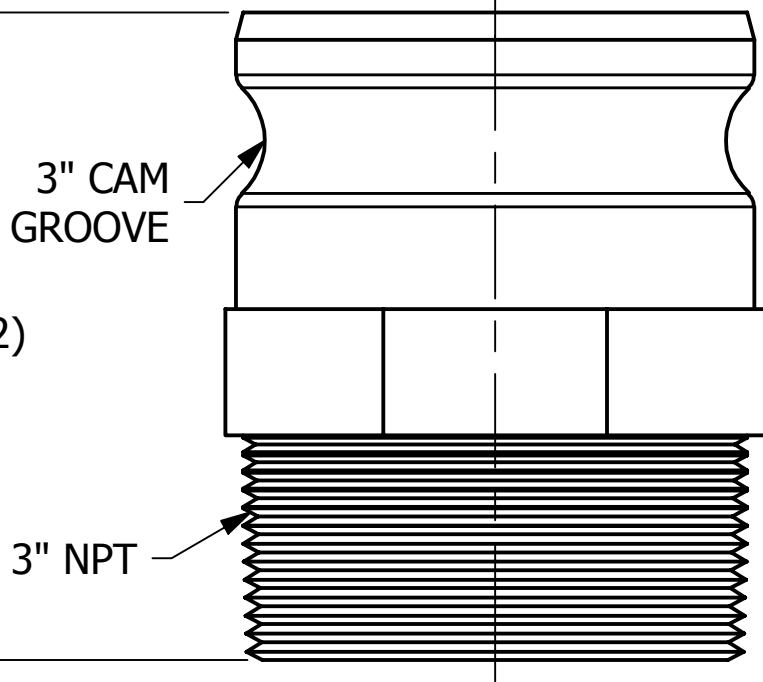
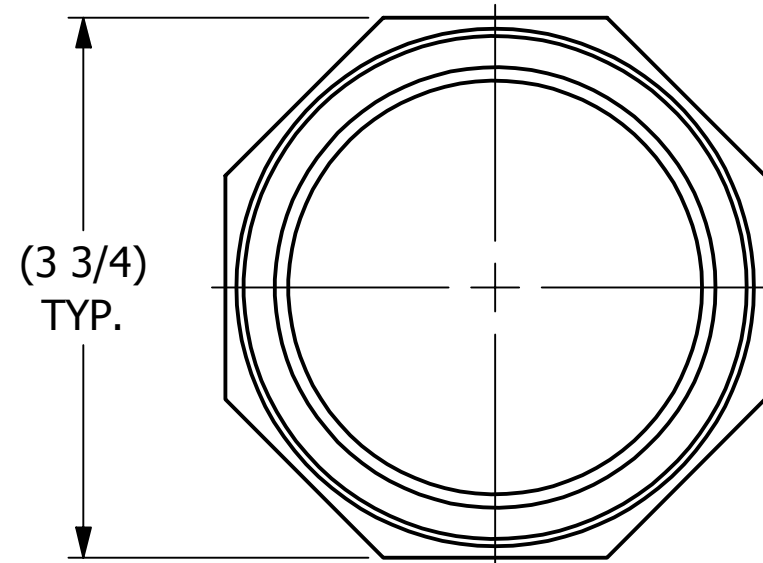



SALES DRAWING

SALES DRAWING



ISOMETRIC VIEW

7 LINKS OF 3/16" CARBON STEEL CHAIN  
APPROXIMATELY 8" IN LENGTH

C	WRB	12-8-11	REMOVED SCA115R1, ADDED SH45307	
B	BG	11-10-1	REMOVED S-HOOK FROM ASSEMBLY	
A	ACC	1-24-05	NEW PART ADDED TO THE NETWORK	
REV	BY	DATE	DESCRIPTION	
<div><div></div><div>SALCO PRODUCTS, INC.</div></div>				
PART NAME: QUICK CONNECT ADAPTER 3"				
1	MATERIAL: DUCTILE IRON			
PROJECT #:		120905FR	SHEET #:	1 OF 1
			SCALE:	3:4
DRAWING #:		PART #:		
5	B19949		K3IMPA	

UNLESS OTHERWISE SPECIFIED DIMENSIONAL TOLERANCES FRACTIONAL: $\pm 1/16$ X.XX: $\pm .03$ X.XXX: $\pm .015$ ANGULAR: $\pm 1^\circ$ DEBURR ALL SHARP EDGES. ALL MACHINED SURFACES TO HAVE A 125 RMS FINISH UNLESS NOTED OTHERWISE. THIRD ANGLE PROJECTION	DRAWN BY:	ACC
	CHECKED BY:	
	PROTOTYPE BY:	ACC
	PROTOTYPE DATE:	11/10/2011
	APPROVED FOR PRODUCTION BY:	ACC
	PRODUCTION DATE:	1/24/2005

THIS PRINT, PROPERTY OF SALCO PRODUCTS INC., CONTAINS PROPRIETARY INFORMATION  
AND MUST NOT BE COPIED, REPRODUCED, OR USED DETRIMENTALLY TO OUR INTEREST.